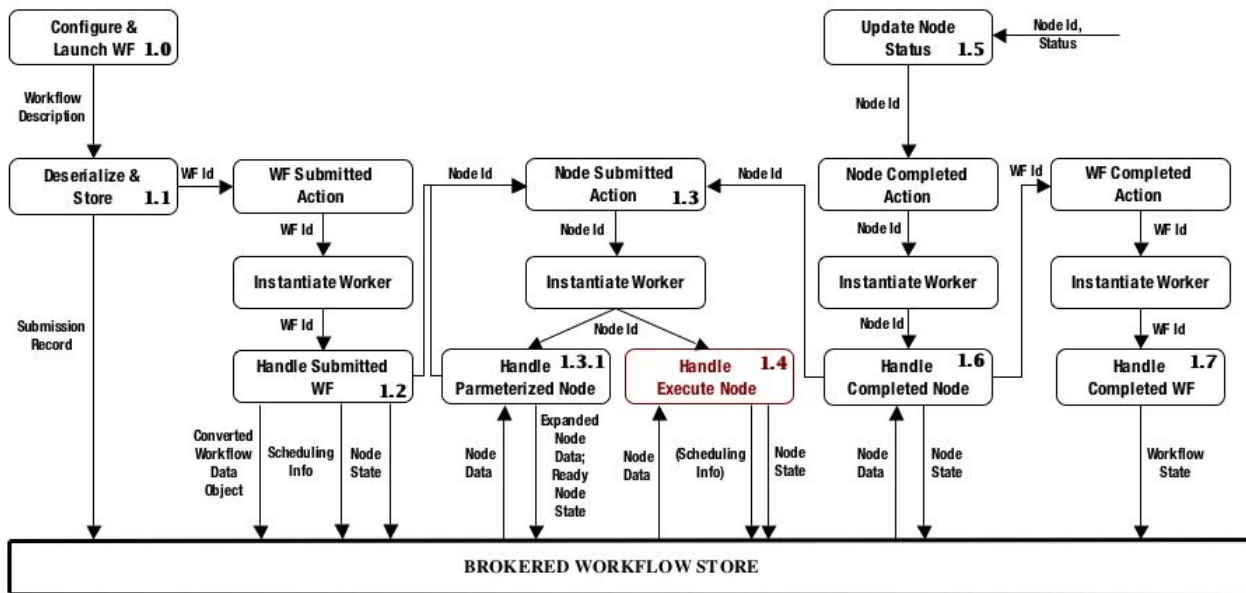


Data-Flow

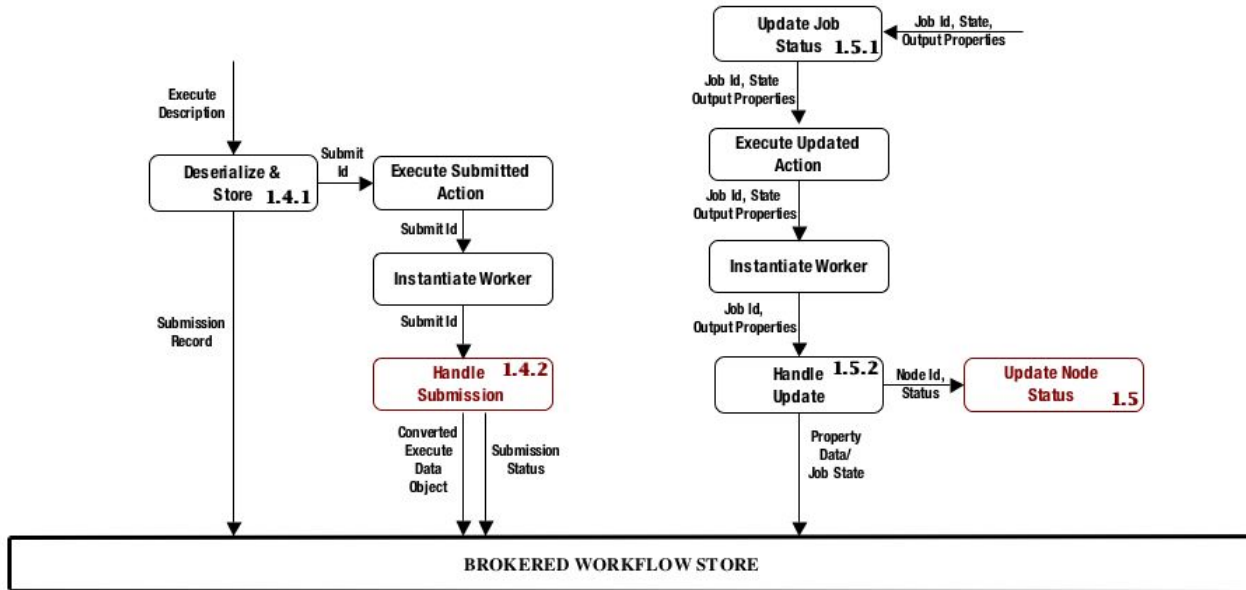
The following data-flow diagrams illustrate what happens inside the broker when a workflow is submitted, or a workflow or node is cancelled or restarted.

NOTE: When a data-processing activity appears in red, that node either gets expanded into one of the other diagrams or is shared between two diagrams.

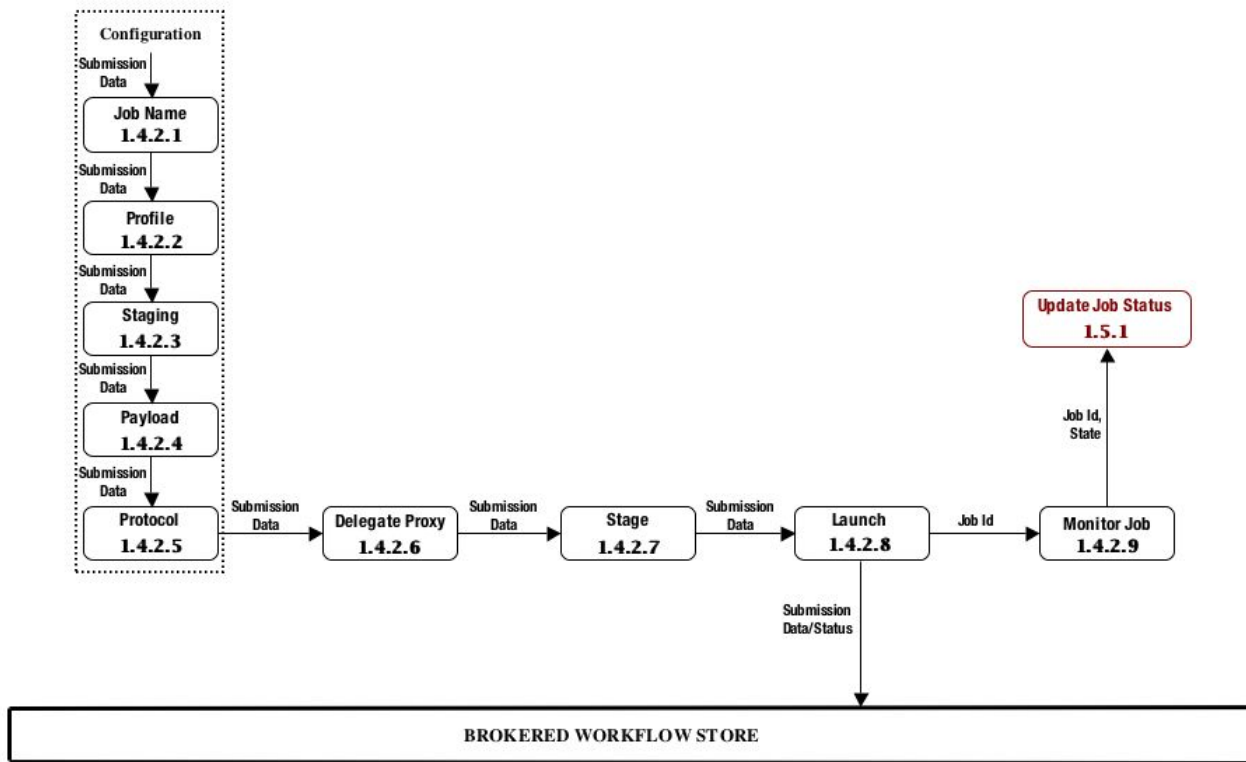
1.0 Workflow Submission



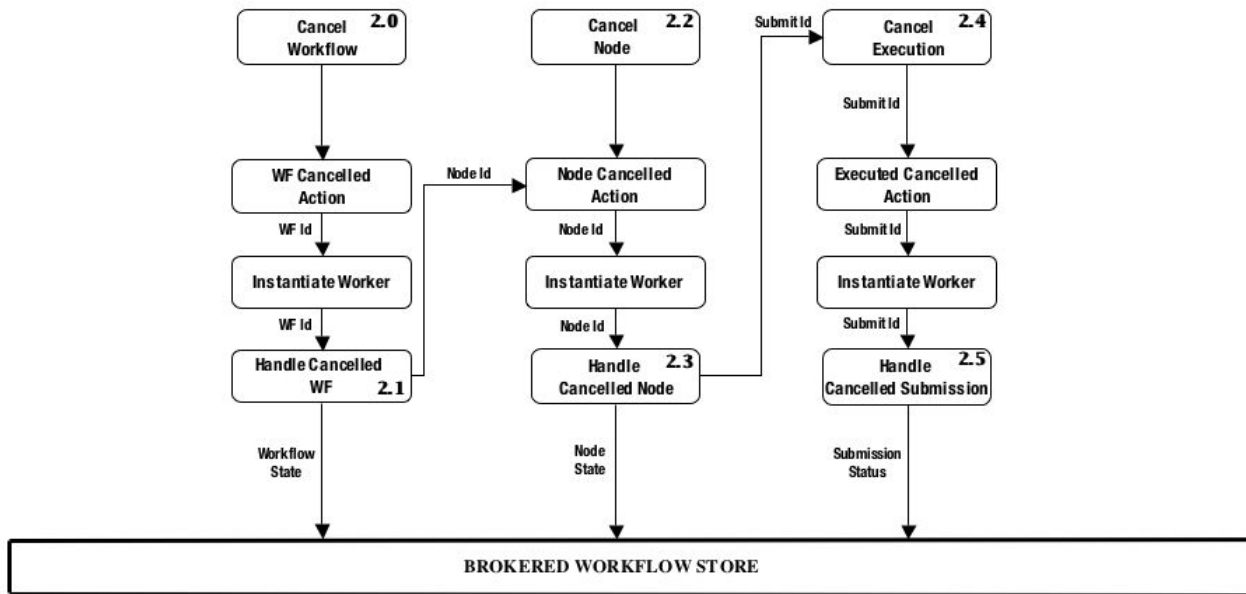
1.4 Executable Node Submission



1.4.2 Job Launch



2 Workflow/Node Cancellation



3 Workflow/Node Restart (Manual)

