

# Visit client and server on Delta

The Delta documentation has moved to <https://docs.ncsa.illinois.edu/systems/delta/>. Please update any bookmarks you may have. Click in the link above if you are not automatically redirected in 5 seconds.

Following: [https://www.sdsc.edu/education\\_and\\_training/tutorials1/visit.html](https://www.sdsc.edu/education_and_training/tutorials1/visit.html)

Here are the screenshots for using Delta in a similar way:



## pick a unique login node, .bashrc on delta

Choose either dt-login01 or dt-login02 (not dt-login) to keep ssh tunnel connections working smoothly.

Be sure to ssh to that login node **before** you proceed (if you have not logged into it before). Visit cannot deal with the initial login confirmation of a new host key.

Add to your \$HOME/.bashrc (for the remote visit gui):

```
module load visit
```

Adjust Maximum processors to fit your requirements.

**Host profiles**

**Hosts**

- delta
- galen-HP-ProBook-455-G6

**Machine**

Host nickname: delta

Remote host name: dt-login.delta.ncsa.illinois.edu

Host name aliases:

☐ Maximum nodes: 1

☒ Maximum processors: 32

Path to Visit installation: /sw/external/visit/visit3\_2\_2.linux-x86\_64

**Account**

Username: arnoldg

**Connection**

☐ Share batch job with Metadata Server

☒ Tunnel data connections through SSH

Method used to determine local host name when not tunneling:

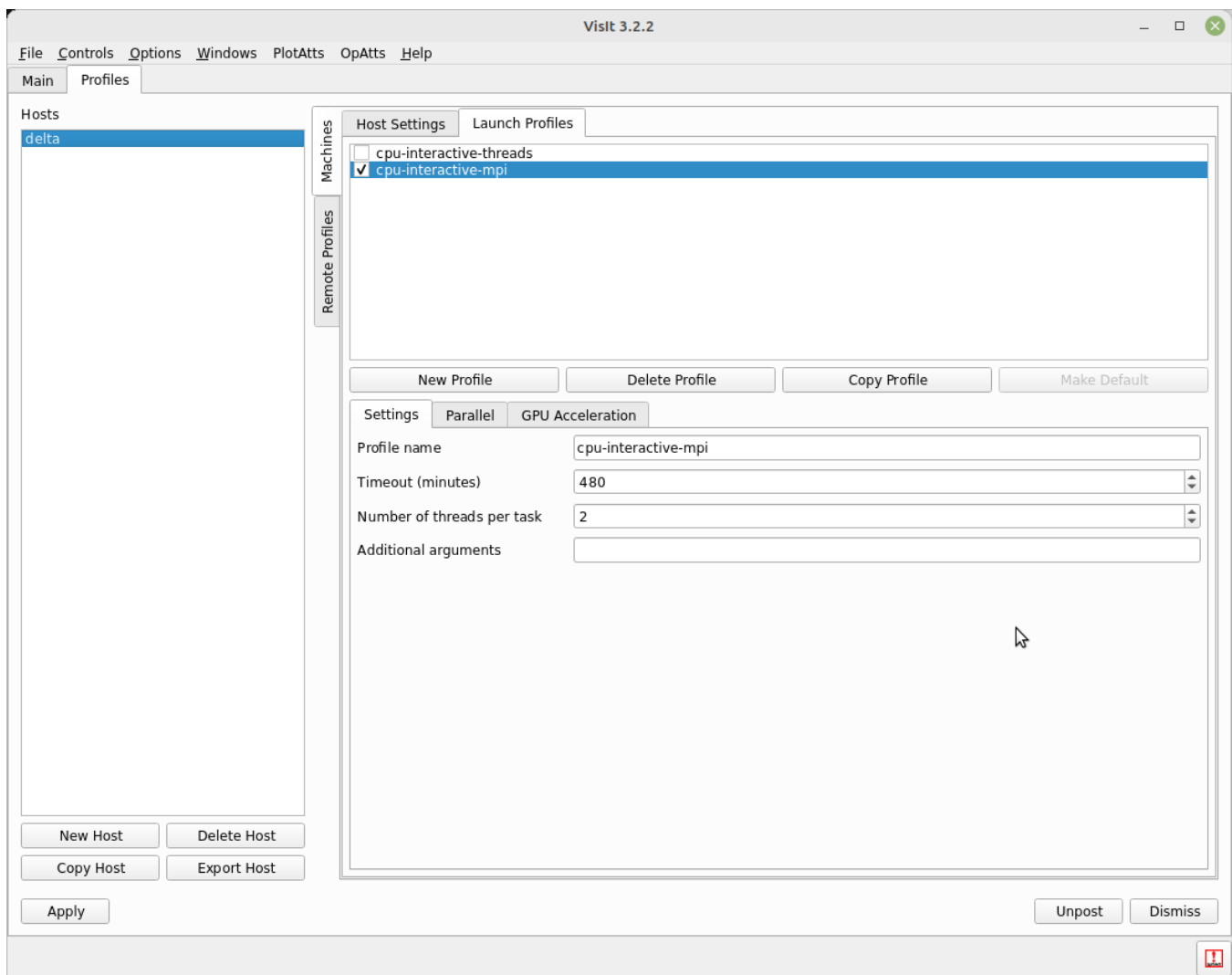
- ☒ Use local machine name
- ☐ Parse from SSH\_CLIENT environment variable
- ☐ Specify manually:

☐ SSH command: ssh

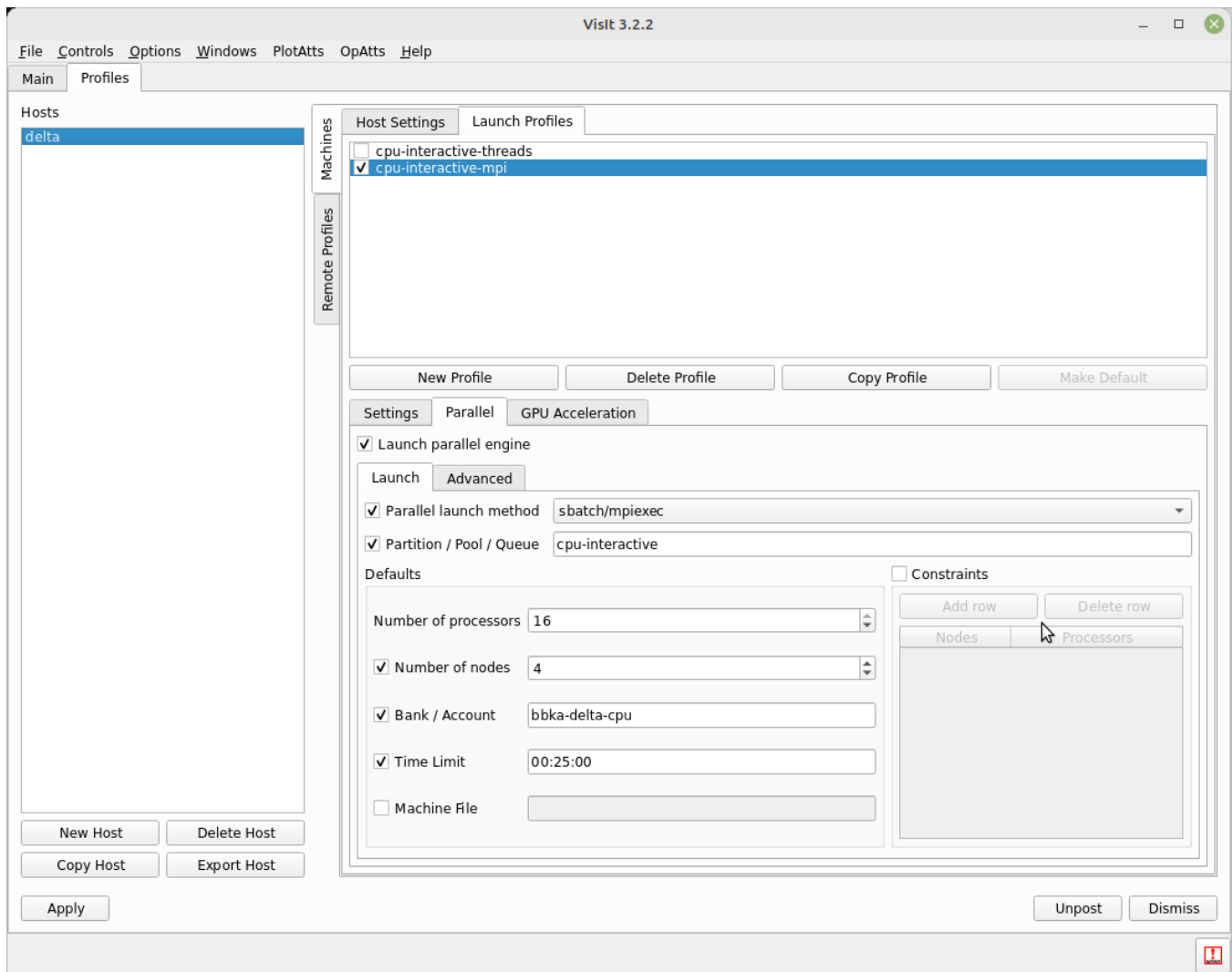
☐ SSH port: 22

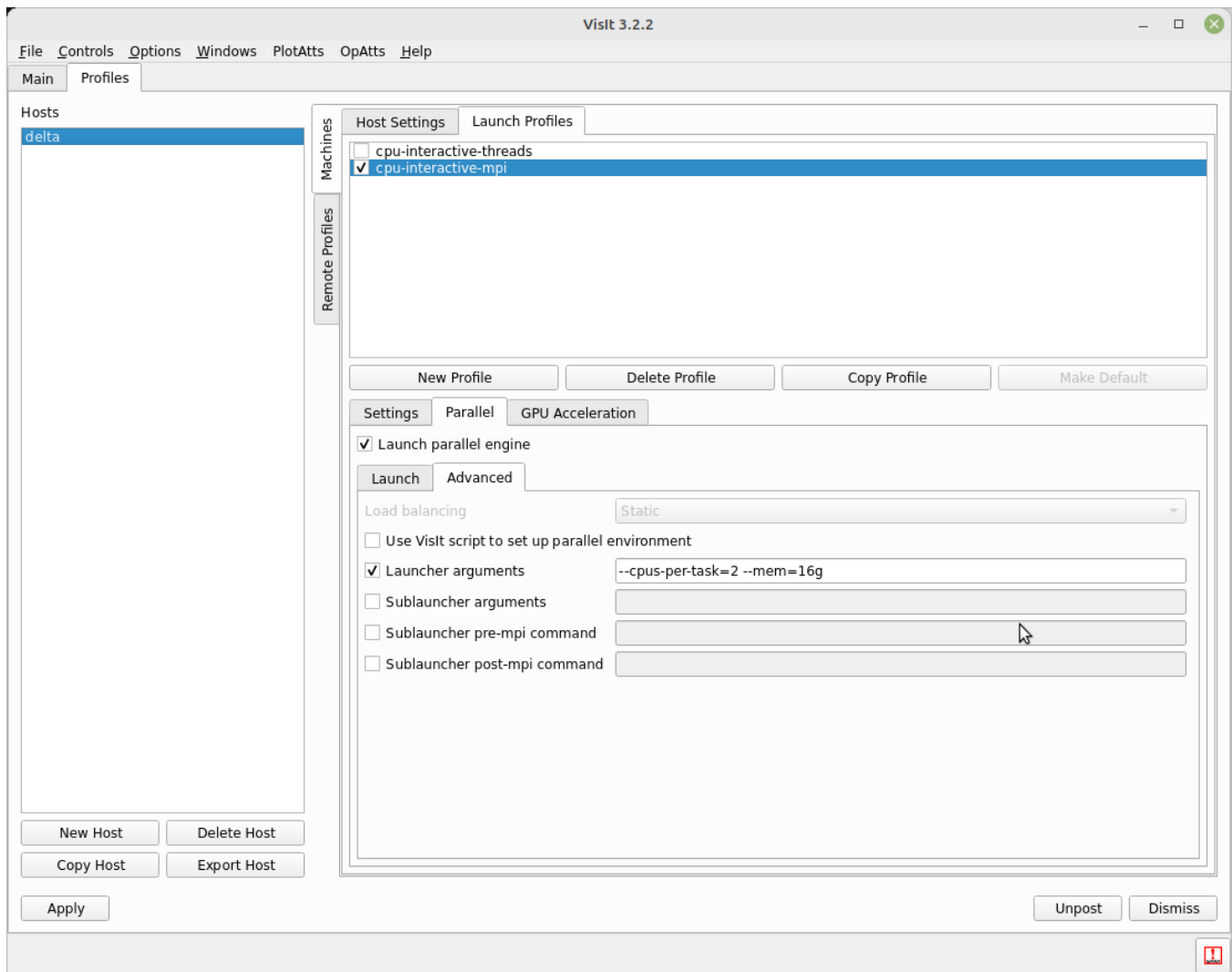
☐ Use gateway:

**Buttons:** New Host, Delete Host, Copy Host, Export Host, Apply, Post, Dismiss



The "-interactive" version of a partition is shown. Note those partitions are for quick tests up to 30 minutes. Choose another partition for longer sessions. Partitions and accounts should match: gpu partitions go with gpu account endings, cpu partitions with cpu account endings.





Options Save Settings after filling in the above.

Proceeding with the tutorial, this is the view from the client and noise.silo example (found in the visit installation data/) ...

File Controls Options Windows PlotAtts OpAtts Help

Main Profiles

Global

Active window 1

Sources

Open Close Reopen Replace Overlay

Active source noise.silo

Time

Plots

Add\_ Operators\_ Delete Hide/Show Draw Variables\_

Vector - grad

Volume - hardyglobal

Apply to

☒ Apply operators to all plots

☒ Apply subset selections to all plots

☐ active win

