

INTERNET  
*2*

**STEPHEN WOLFF**

-----  
CTO Internet2

JUNE 12, 2013

**ABOUT INTERNET2**

# Internet2

---

- US not-for-profit, 1996
  - Member owned
  - Member-funded
- Supplying to Members:
  - Network services
  - Networked services
- Members

Higher Ed	257
R&E Networks	41
Affiliate	67
Industry	86
- Board of Trustees
  - 6 university presidents
  - 2 former presidents
  - 3 university CIOs
  - other academic administration
  - DoE National Lab
  - Industry
  - network research
  - disciplinary research
  - R&E network



# Internet2 Network Infrastructure Topology

July 2013



IN SUPPORT OF  
**U.S.UCAN**

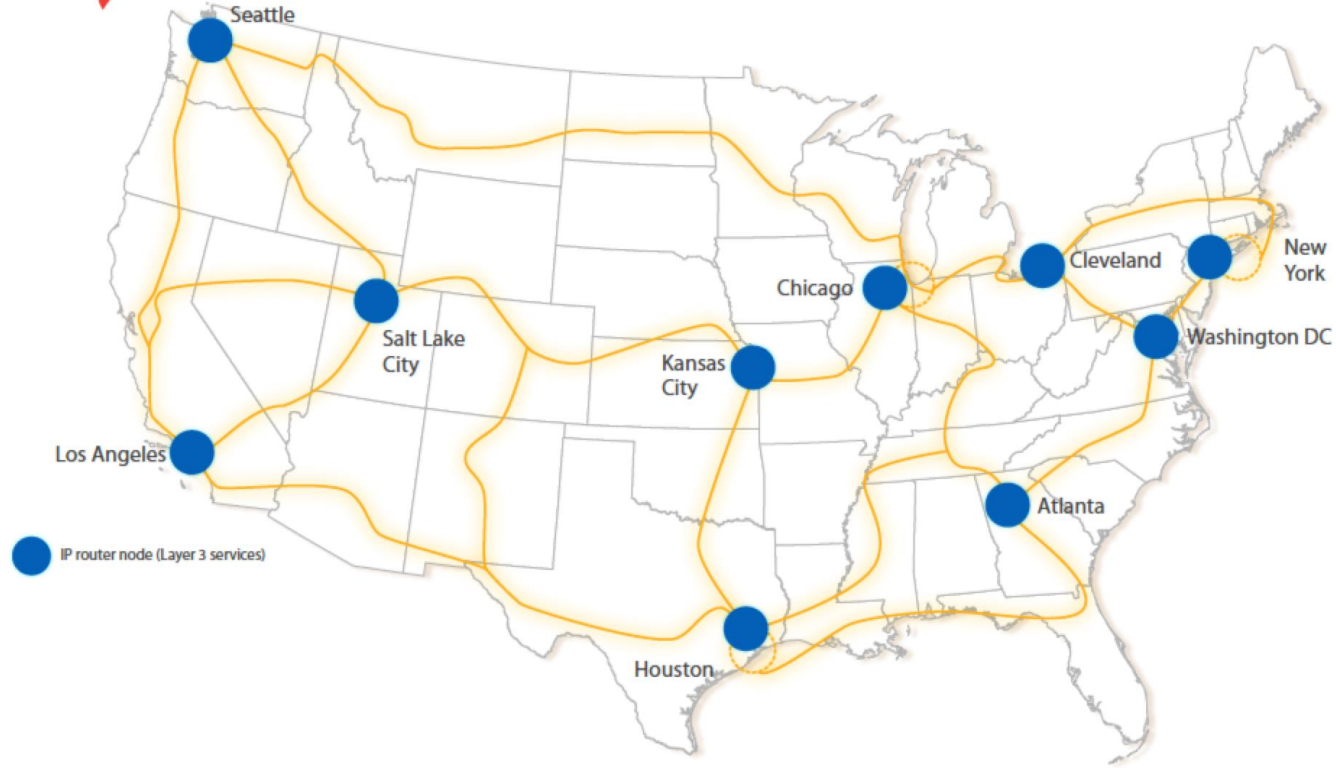
NETWORK PARTNERS





# Internet2 Network Infrastructure Topology

July 2013



IN SUPPORT OF  
**U.S.UCAN**

NETWORK PARTNERS

**ciena**



**INDIANA UNIVERSITY**

**infinera**

**JUNIPER**  
networks



# International connectivity

---

- WIX
- MANLAN
- Singapore
- Fujairah
- 100G ANA
- Access to other GOLEs
  - Starlight
  - Atlantic Wave
  - Pacific Wave
- MoUs with almost all NRENs globally

# Net+: Internet2 services “above the net”

---

- Trust & identity
  - inCommon federation
    - Certificate service
    - Assurance program
    - Multifactor auth
  - Shibboleth
  - Grouper
  - coManage
  - eduPerson
  - eduOrg
- Cloud services
  - Aastra/Level 3 SIP services
  - Box
  - Canvas
  - Duo Security
  - Blue Jeans Network
  - CrashPlan PROe
  - Desire2Learn Capture
  - Desire2Learn Learning Environment
  - DuraCloud
  - eduroam

# Other

---

- *Operating Innovative Networks & Broadening the Reach* workshops
- Performance workshops
  - perfSONAR development with ESnet, IU
  - Collaboration with NCBI on perfSONAR vs. AWS
- Network troubleshooting
- Digital Preservation Network (DPN)
- Research Data Alliance
- Proposal preparation assistance
- Letters of Support
- *Research Wave* program
- *Innovation Platform* initiative
  - 100G into campus
  - Science DMZ
  - SDN

# Questions?

---

- [rs@internet2.edu](mailto:rs@internet2.edu)
- [swloff@internet2.edu](mailto:swloff@internet2.edu)