

JEFF CARPENTER

MULTIMEDIA
SPECIALIST /
VISUALIZATION
DESIGNER

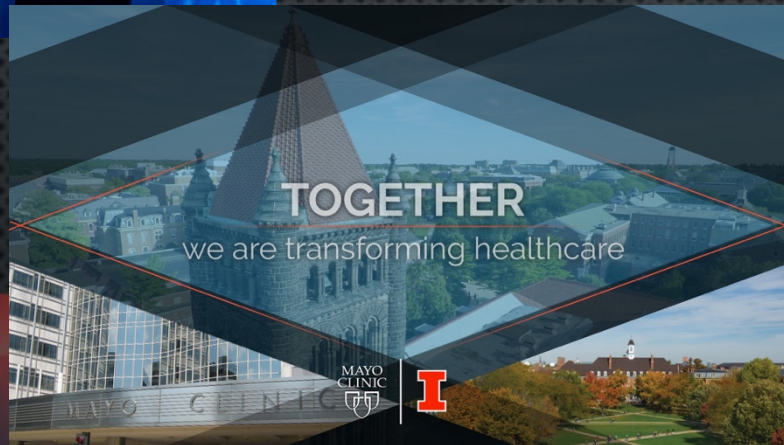
NCSA ADVANCED
VISUALIZATION LAB /
EDREAM / CADENS

VIDEO

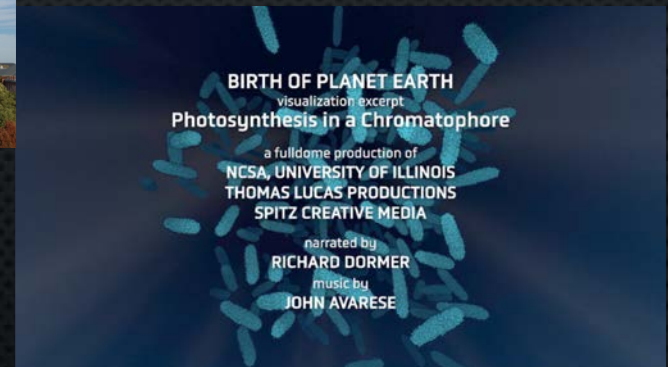
- EDITING
- MOTION GRAPHICS
- FIELD & STUDIO PRODUCTION
- VIDEOGRAPHY & LIGHTING
- AUDIO POST PRODUCTION & CLEANUP
- NARRATION & VOICE OVER
- ARCHIVING
- SCRIPT WRITING
- IN MY TENURE AT NCSA, I HAVE BEEN INVOLVED IN THE CREATION OF 50+ VIDEO TITLES AND COUNTLESS HOURS OF EVENT DOCUMENTATION AND RAW VIDEO CAPTURE



VIDEO EDITING & PACKAGING



Can you
imagine?



VIDEO EDITING & PACKAGING

SOLUTIONS FOR
NIH DATA COMMONS



BLUE WATERS

SUSTAINED PETASCALE COMPUTING



SO'NT '10

SCIENCE OLYMPIAD
NATIONAL TOURNAMENT

UNIVERSITY OF ILLINOIS

TOGETHER

we are transforming healthcare



Can you
imagine?

Illinois/Mayo Alliance kickoff opener

https://mediaspace.illinois.edu/media/t/1_a2mqciwy



BIRTH OF PLANET EARTH
Visualization excerpt
Photosynthesis in a Chromatophore

a full-dome production of
NCSA, UNIVERSITY OF ILLINOIS
THOMAS LUCAS PRODUCTIONS
SPITZ CREATIVE MEDIA

narrated by
RICHARD DORMER

music by
MUSIC BY

VIDEO EDITING & PACKAGING

SOLUTIONS FOR
NIH DATA COMMONS



BLUE WATERS

SUSTAINED PETASCALE COMPUTING



SOONT '10

SCIENCE OLYMPIAD
NATIONAL TOURNAMENT

UNIVERSITY OF ILLINOIS

TOGETHER
we are transforming healthcare



Can you
imagine?

The National Data Service

https://mediaspace.illinois.edu/media/t/1_xgsunx0k

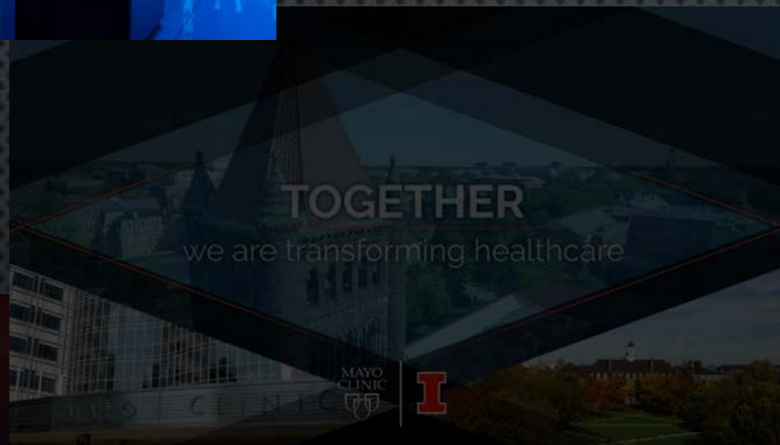


BIRTH OF PLANET EARTH
Visualization excerpt
Photosynthesis in a Chromatophore

a full-dome production of
NCSA, UNIVERSITY OF ILLINOIS
THOMAS LUCAS PRODUCTIONS
SPITZ CREATIVE MEDIA

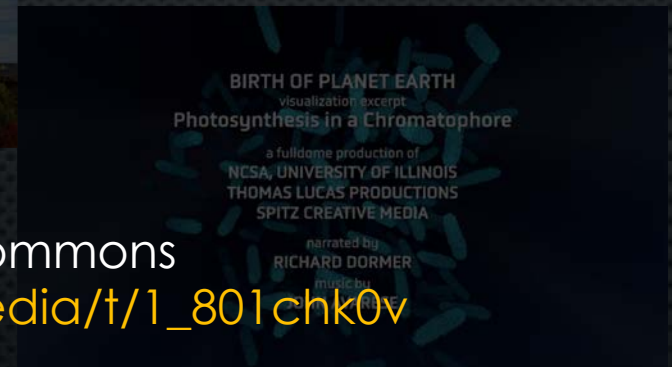
narrated by
RICHARD DORMER
music by

VIDEO EDITING & PACKAGING



Can you
imagine?

Solutions for NIH Data Commons
https://mediaspace.illinois.edu/media/t/1_801chk0v



VIDEO EDITING & PACKAGING



Can You Imagine? (SC booth video)
https://youtu.be/uk1KAN0bE_M



VIDEO EDITING & PACKAGING

SOLUTIONS FOR
NIH DATA COMMONS



BLUE WATERS

SUSTAINED PETASCALE COMPUTING



SO₂NT '10

SCIENCE OLYMPIAD
NATIONAL TOURNAMENT

UNIVERSITY OF ILLINOIS

TOGETHER

we are transforming healthcare



Can you
imagine?

Photosynthesis in a Chromatophore

https://mediaspace.illinois.edu/media/t/1_12y7kuog



BIRTH OF PLANET EARTH
Visualization excerpt
Photosynthesis in a Chromatophore

a full-dome production of
NCSA, UNIVERSITY OF ILLINOIS
THOMAS LUCAS PRODUCTIONS
SPITZ CREATIVE MEDIA

narrated by
RICHARD DORMER
music by
JOHN AVARESE

VIDEO EDITING & PACKAGING



Livin' Like A Rock Star (Science Olympiad National Tournament Opener)
<https://youtu.be/E7I2XZ-Fcx8>



Coursera

3D DATA VISUALIZATION FOR SCIENCE
COMMUNICATION

WWW.COURSERA.ORG/LEARN/DATA-VISUALIZATION-SCIENCE-COMMUNICATION/

37 individual videos

Video Editing

Motion Graphics

Sound editing & “sweetening”

Photo Retouching

Logo Design

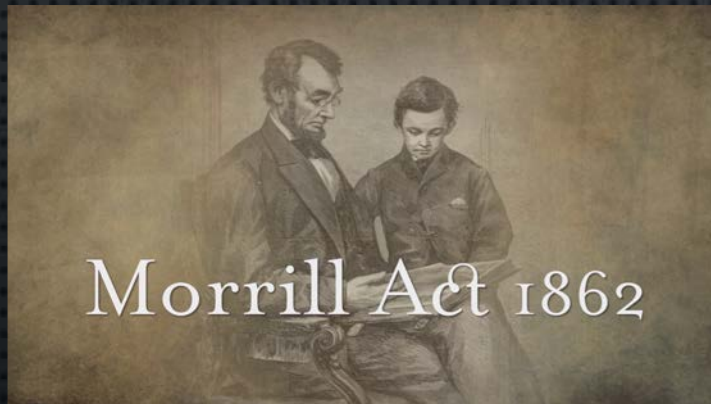


MOTION DESIGN

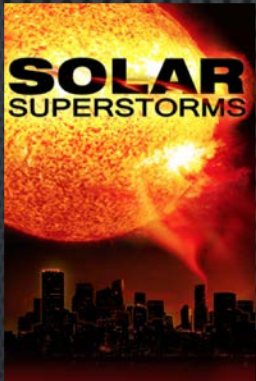
- MOTION DESIGN IS APPLYING GRAPHIC DESIGN PRINCIPLES TO FILM & VIDEO PRODUCTIONS THROUGH THE USE OF ANIMATION AND VISUAL EFFECTS
- MUCH OF THE WORK I DO IS MANIPULATING 2D IMAGES AS TEXTURES OR AS ELEMENTS WITHIN LARGER VIDEO & MULTIMEDIA PROJECTS

MOTION DESIGN EXAMPLES

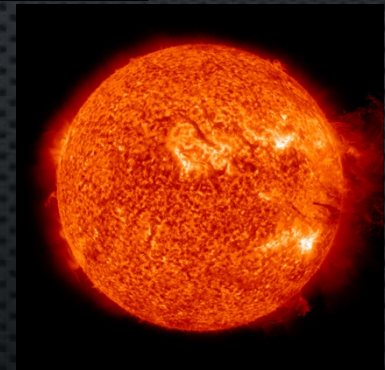
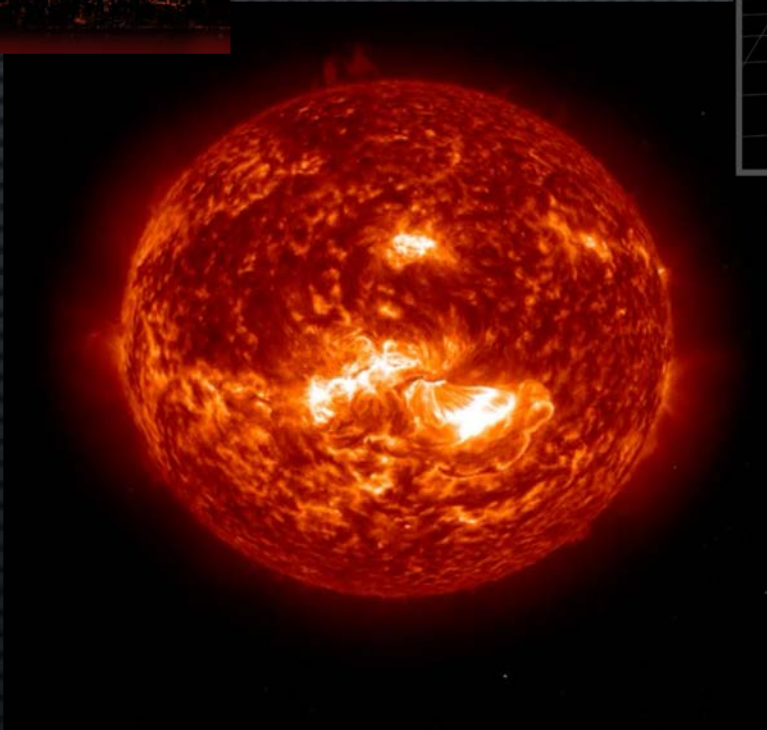
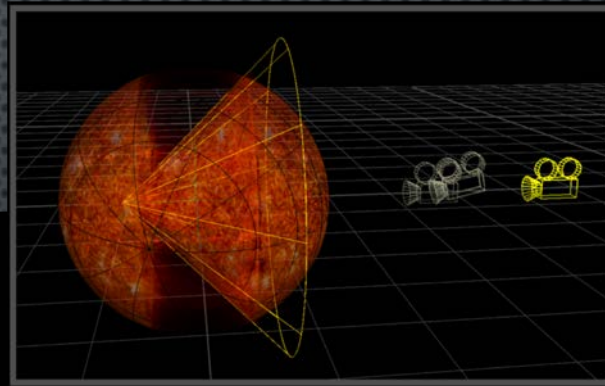
CAN YOU
IMAGINE?



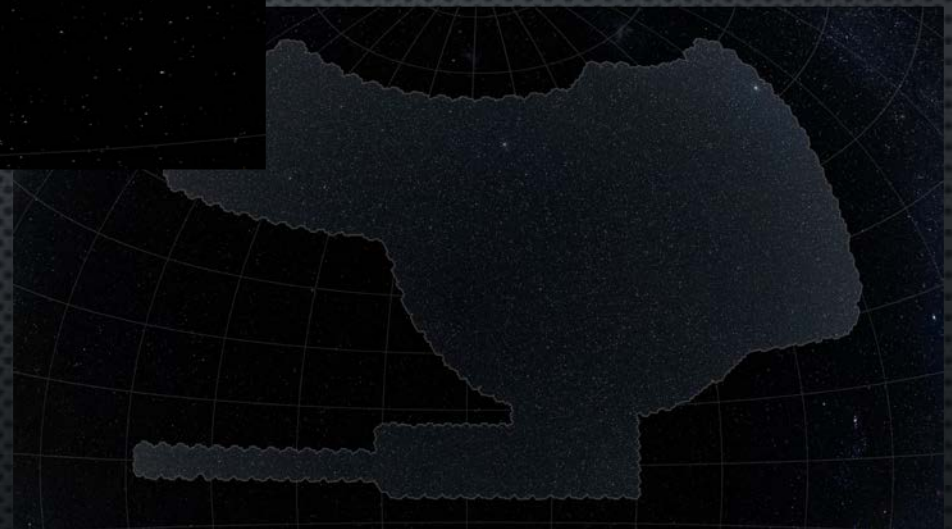
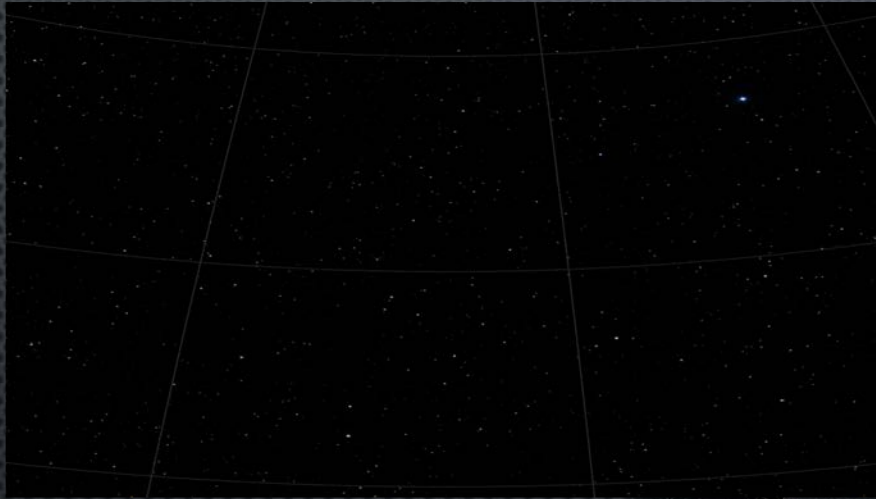
SCIENTIFIC ILLUSTRATION & DATA VIS



Solar Superstorms
Mapping 2D images from NASA Solar Dynamic
Observatory to 3D



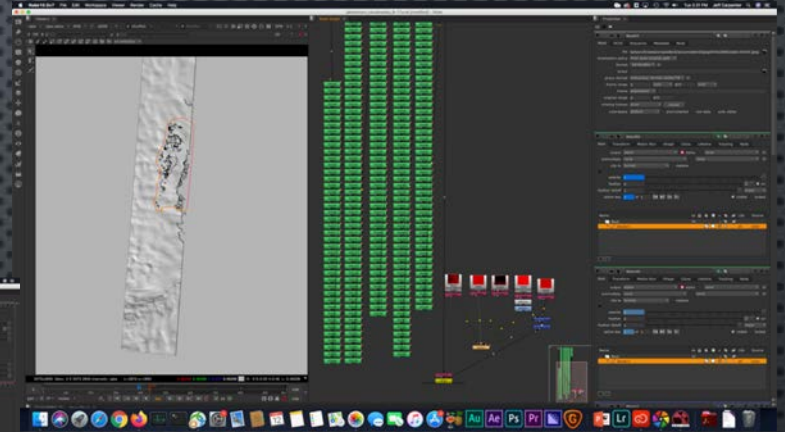
SCIENTIFIC ILLUSTRATION & DATA VIS



- SEEING THE BEGINNING OF TIME
DES & LSST BUILDUP ANIMATION

ANIMATING & COMPOSITING

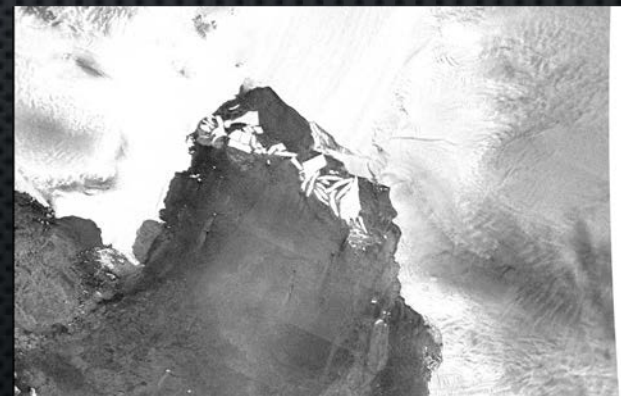
- ATLAS OF A CHANGING EARTH
ANIMATING PINE ISLAND ICEBERG BREAKUP
CLOUD MATTE & TEXTURE CLEANUP



Cloud noise removal

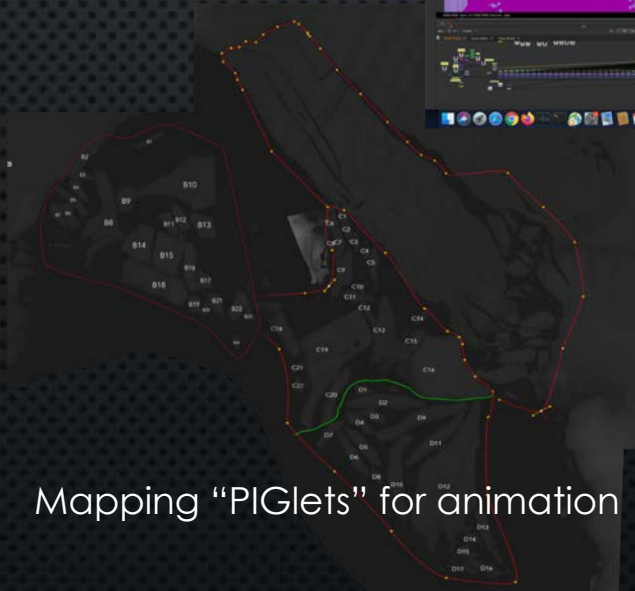


Digital Elevation Map



Sentinel Radar Imagery

Mapping "PIGlets" for animation

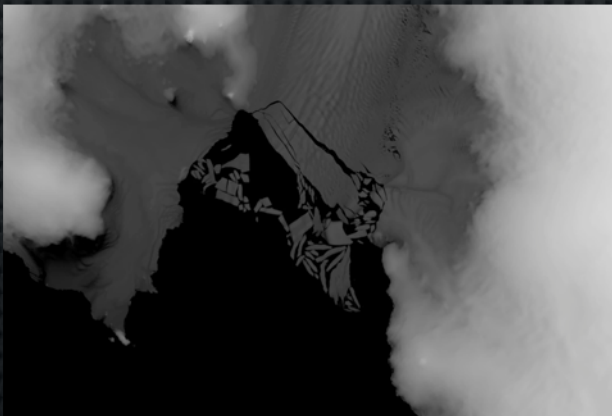


ANIMATING & COMPOSITING

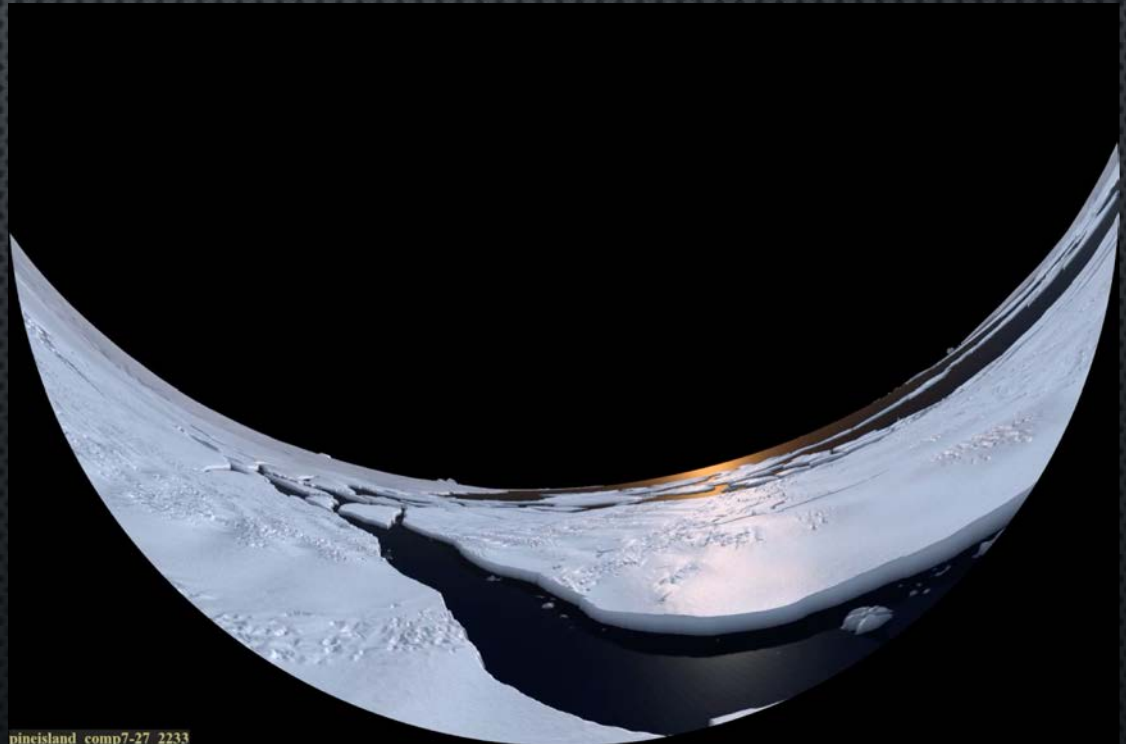
- ATLAS OF A CHANGING EARTH
ANIMATING PINE ISLAND ICEBERG BREAKUP
CLOUD MATTE & TEXTURE CLEANUP



Sentinel Radar Imagery



Rotoscope Animated DEM

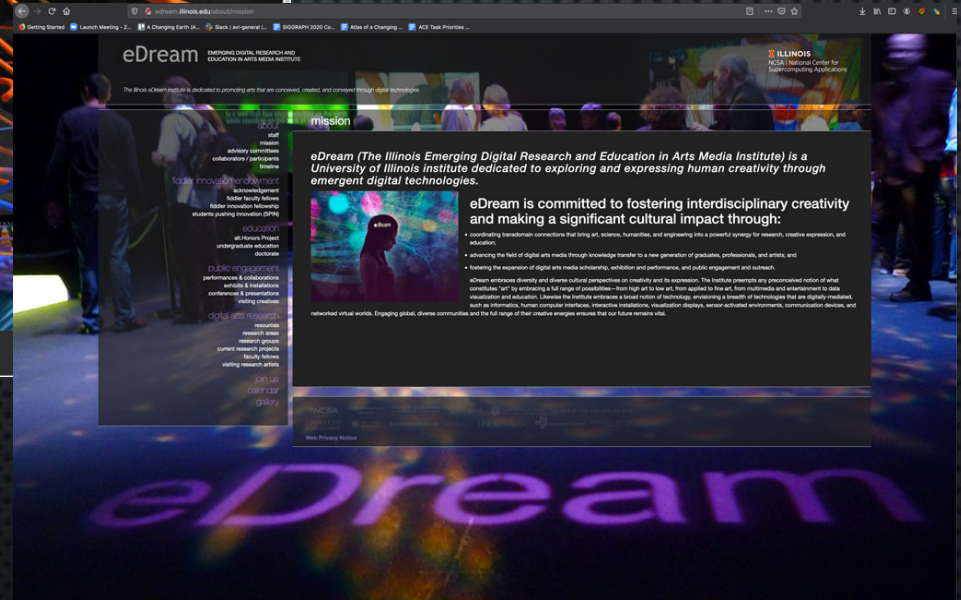


Dome Rendered Composite

WEB DESIGN & MAINTENANCE



AVL.NCSA.ILLINOIS.EDU



EDREAM.ILLINOIS.EDU

VISUALIZATION ARCHIVE



Center for Multimedia Excellence at the University of Illinois

- Comprises some of the earliest examples of SciVis created by NCSA from 1985 – 2003
- Working with Josh Harris & Media Preservation at the library
- Over 1096 individual tapes have been catalogued
- Approximately 250 titles have been slated to be digitized in the initial phase.
- This list does include overlap but does not include original field recordings



Center for Multimedia Excellence at the University of Illinois

DVD, VHS, cassette tape, 16mm film, audio CDs, transparencies, slides, photographs. These and many, and more types of multimedia lie tucked under desks and file cabinets, hold papers, sit on shelves, but are mostly unused. Some individuals have employed systems of organizing and continue to make their media accessible to other researchers. Still, the majority of campus video productions, artistic renderings, visualizations, and cultural recordings are being lost out of negligence.

On February 8, 2011 the CME implemented the first step of a multi-phased plan to unite professionals across campus with the CME Media Census. From this effort, we have received a number of responses, which were gathered through the efforts of CME graduate practitioner students, who solicited responses and promoted awareness through door-to-door office visits.

On March 30, 2011 the Vice Chancellor for Research published an email to campus in support of the CME, encouraging campus officials to support the initiative. Within 24 hours 246 more responses were submitted. This clearly demonstrates that without support from administration and campus officials, the CME will remain a slow and tedious process.

The Center for Multimedia Excellence (CME) seeks to identify individuals and campus-wide systems of organizing and continue to make their media accessible to other researchers. Still, the majority of campus video productions, artistic renderings, visualizations, and cultural recordings are being lost out of negligence.

On March 30, 2011 the Vice Chancellor for Research published an email to campus in support of the CME, encouraging campus officials to support the initiative. Within 24 hours 246 more responses were submitted. This clearly demonstrates that without support from administration and campus officials, the CME will remain a slow and tedious process.

The Center for Multimedia Excellence (CME) seeks to identify individuals and campus-wide systems of organizing and continue to make their media accessible to other researchers. Still, the majority of campus video productions, artistic renderings, visualizations, and cultural recordings are being lost out of negligence.

On March 30, 2011 the Vice Chancellor for Research published an email to campus in support of the CME, encouraging campus officials to support the initiative. Within 24 hours 246 more responses were submitted. This clearly demonstrates that without support from administration and campus officials, the CME will remain a slow and tedious process.

The Center for Multimedia Excellence (CME) seeks to identify individuals and campus-wide systems of organizing and continue to make their media accessible to other researchers. Still, the majority of campus video productions, artistic renderings, visualizations, and cultural recordings are being lost out of negligence.

On March 30, 2011 the Vice Chancellor for Research published an email to campus in support of the CME, encouraging campus officials to support the initiative. Within 24 hours 246 more responses were submitted. This clearly demonstrates that without support from administration and campus officials, the CME will remain a slow and tedious process.

The Center for Multimedia Excellence (CME) seeks to identify individuals and campus-wide systems of organizing and continue to make their media accessible to other researchers. Still, the majority of campus video productions, artistic renderings, visualizations, and cultural recordings are being lost out of negligence.

On March 30, 2011 the Vice Chancellor for Research published an email to campus in support of the CME, encouraging campus officials to support the initiative. Within 24 hours 246 more responses were submitted. This clearly demonstrates that without support from administration and campus officials, the CME will remain a slow and tedious process.

The Center for Multimedia Excellence (CME) seeks to identify individuals and campus-wide systems of organizing and continue to make their media accessible to other researchers. Still, the majority of campus video productions, artistic renderings, visualizations, and cultural recordings are being lost out of negligence.

On March 30, 2011 the Vice Chancellor for Research published an email to campus in support of the CME, encouraging campus officials to support the initiative. Within 24 hours 246 more responses were submitted. This clearly demonstrates that without support from administration and campus officials, the CME will remain a slow and tedious process.

The Center for Multimedia Excellence (CME) seeks to identify individuals and campus-wide systems of organizing and continue to make their media accessible to other researchers. Still, the majority of campus video productions, artistic renderings, visualizations, and cultural recordings are being lost out of negligence.

On March 30, 2011 the Vice Chancellor for Research published an email to campus in support of the CME, encouraging campus officials to support the initiative. Within 24 hours 246 more responses were submitted. This clearly demonstrates that without support from administration and campus officials, the CME will remain a slow and tedious process.



Josh Harris and Josh Harris are shown in a library or archive, looking at shelves filled with boxes or containers.

On February 8, 2011 the CME implemented the first step of a multi-phased plan to unite professionals across campus with the CME Media Census. From this effort, we have received a number of responses, which were gathered through the efforts of CME graduate practitioner students, who solicited responses and promoted awareness through door-to-door office visits.

On March 30, 2011 the Vice Chancellor for Research published an email to campus in support of the CME, encouraging campus officials to support the initiative. Within 24 hours 246 more responses were submitted. This clearly demonstrates that without support from administration and campus officials, the CME will remain a slow and tedious process.

The Center for Multimedia Excellence (CME) seeks to identify individuals and campus-wide systems of organizing and continue to make their media accessible to other researchers. Still, the majority of campus video productions, artistic renderings, visualizations, and cultural recordings are being lost out of negligence.

On March 30, 2011 the Vice Chancellor for Research published an email to campus in support of the CME, encouraging campus officials to support the initiative. Within 24 hours 246 more responses were submitted. This clearly demonstrates that without support from administration and campus officials, the CME will remain a slow and tedious process.

The Center for Multimedia Excellence (CME) seeks to identify individuals and campus-wide systems of organizing and continue to make their media accessible to other researchers. Still, the majority of campus video productions, artistic renderings, visualizations, and cultural recordings are being lost out of negligence.

VISUALIZATION ARCHIVE



Center for Multimedia Excellence at the University of Illinois

DVD, VHS, cassette tape, 16mm film, audio CDs, transparencies, slides, photographs. These and many and more types of multimedia files are tucked under desks and file cabinets, held in lockers, and stored in closets. Some individuals have employed systems of organizing and continue to make their media accessible to other researchers. Still, the majority of campus video productions, artistic renderings, visualizations, and cultural or historical artifacts are difficult to find. The University of Illinois at Urbana-Champaign campus institutions nation wide have begun to take steps to ensure their multimedia collections are preserved and accessible to the public. An agency is growing across all departments, we must take definite steps toward counting and preserving campus media. Just entire decades of campus life records of minority cultures and events are being lost. The Center for Multimedia Excellence (CME) seeks to identify individuals and campus departments that have created and preserved research purposes.

<http://www.cme.uiowa.edu/about>

On February 8, 2011 the CME implemented the first step of a multi-phased plan to unite professionals across campus with the CME Media Census. From responses were gathered through the CME Media Census. In February 2011, the CME surveyed graduate program students who selected responses and promoted awareness through door-to-door office visits.

On March 30, 2011 the Vice Chancellor for Research published an email to campus in support of the CME. The email encouraged all departments to submit. This clearly demonstrates that without the support of campus departments, the CME would not be able to fulfill its purpose. The CME is the primary contact point for departments manage, store, and share research data. Because data is communicated across a variety of platforms—images, audio, video—media collections uncovered by CME Census responses will strengthen the CME's ability to identify individuals and campus departments that have created and preserved research purposes.

<http://blogs.uiowa.edu/illinois-the-history-and-the-arts-46>



Center for Multimedia Excellence at the University of Illinois

DVD, VHS, cassette tape, 16mm film, audio CDs, transparencies, slides, photographs. These and many and more types of multimedia files are tucked under desks and file cabinets, held in lockers, and stored in closets. Some individuals have employed systems of organizing and continue to make their media accessible to other researchers. Still, the majority of campus video productions, artistic renderings, visualizations, and cultural or historical artifacts are difficult to find. The University of Illinois at Urbana-Champaign campus institutions nation wide have begun to take steps to ensure their multimedia collections are preserved and accessible to the public. An agency is growing across all departments, we must take definite steps toward counting and preserving campus media. Just entire decades of campus life records of minority cultures and events are being lost. The Center for Multimedia Excellence (CME) seeks to identify individuals and campus departments that have created and preserved research purposes.

On February 8, 2011 the CME implemented the first step of a multi-phased plan to unite professionals across campus with the CME Media Census. From responses were gathered through the CME Media Census. In February 2011, the CME surveyed graduate program students who selected responses and promoted awareness through door-to-door office visits.

On March 30, 2011 the Vice Chancellor for Research published an email to campus in support of the CME. The email encouraged all departments to submit. This clearly demonstrates that without the support of campus departments, the CME would not be able to fulfill its purpose. The CME is the primary contact point for departments manage, store, and share research data. Because data is communicated across a variety of platforms—images, audio, video—media collections uncovered by CME Census responses will strengthen the CME's ability to identify individuals and campus departments that have created and preserved research purposes.

On February 8, 2011 the CME implemented the first step of a multi-phased plan to unite professionals across campus with the CME Media Census. From responses were gathered through the CME Media Census. In February 2011, the CME surveyed graduate program students who selected responses and promoted awareness through door-to-door office visits.

On March 30, 2011 the Vice Chancellor for Research published an email to campus in support of the CME. The email encouraged all departments to submit. This clearly demonstrates that without the support of campus departments, the CME would not be able to fulfill its purpose. The CME is the primary contact point for departments manage, store, and share research data. Because data is communicated across a variety of platforms—images, audio, video—media collections uncovered by CME Census responses will strengthen the CME's ability to identify individuals and campus departments that have created and preserved research purposes.

- Once archive quality captures have been done, the challenge is making them available to the public
- By creating a searchable repository, our legacy can continue to be used as a source for historic discovery and use in new works.
- Software Development and Application Support groups would be very helpful in making this happen
- This repository only includes the work stored on physical media, a subsequent challenge will be how to deal with the "born digital" assets we are creating daily

MUSEUM KIOSK DEVELOPMENT



- Miniature Masterpieces Spurlock interactive exhibit

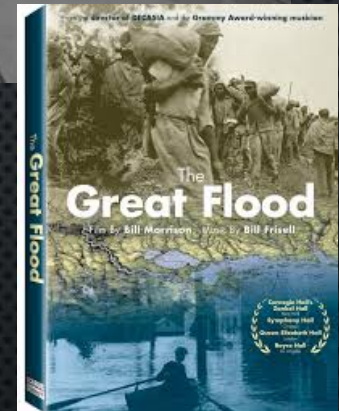
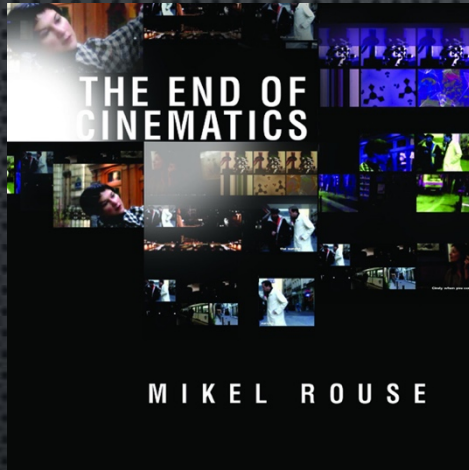
<https://www.spurlock.illinois.edu/collections/notable-collections/profiles/cylinder-seals.html>



Tornado visualization for Museum of Science & Industry "Science Storms"



SCI VIS IN PERFORMANCE



PHOTOGRAPHY

